



# VK Lite-B Series

Video Wall Controller  
Powerful Video and Image Processing Device



# VK Lite B Series Video Wall Controller

VK Lite B series video wall controller is new generation professional image processing product which is based on the development of multi-windows, ultra-high definition and visual display control technology. Compare to other matrix switcher in the market, VK Lite B series has upgraded its system capacity and use 6.25G base exchange processing chip, so that there is a significant advantage on the processing speed and professional display control. Meanwhile, VK Lite B series video wall controller supports multiple services and long term reliability. It is an all-in-one product which has monitoring control, Scene preset, Log management, User management and other advanced applications to meet a variety of professional system application requirements.



## FEATURES

- Pure-hardware FPGA Array, modular design, 6.25G/s base exchange processing speed;
- Support HDMI sources self-adaption on single input card;
- Support HDCP2.0 for HDMI input and output;
- Support opening 4 windows on single display;
- Support scene management, up to 64 scenes;
- Integrated with hybrid matrix function, output windows switching, friendly to system integrator;
- Support RS232, Network control and compatible with third party control system;
- Support roaming, PIP, overlay, zoom in/out, multi-window switching, signal clip and a variety of display modes such as split screen, full screen and combination screen;
- Mobile visual management applications, support iPad, Surface;
- Support EDID, customize the output resolution according to the physical resolution of the display system;

VK Lite B Series

Video Wall Controller

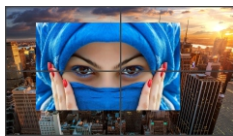
Mini size suitable for small display video wall system



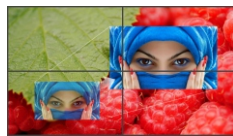
Support **HDMI**  
4 inputs 8 outputs / 8 inputs 4 outputs



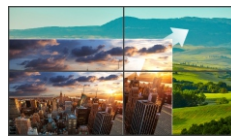
Support IPAD control, flexible display modes such as picture in picture, zoom in/out, roaming, overlay, cross screen, etc.



PIP



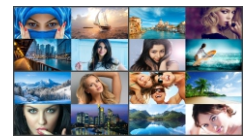
Roaming



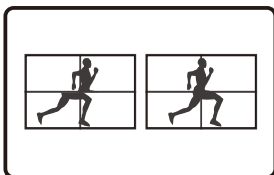
Zoom In/out



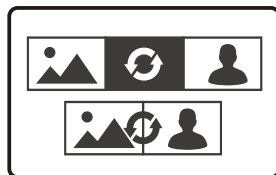
Cross Screen



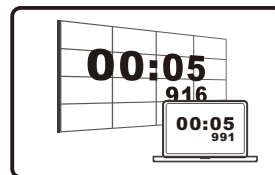
4 Windows/Per Screen



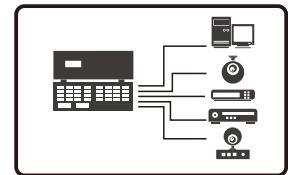
Frame Synchronization



Seamless Switching

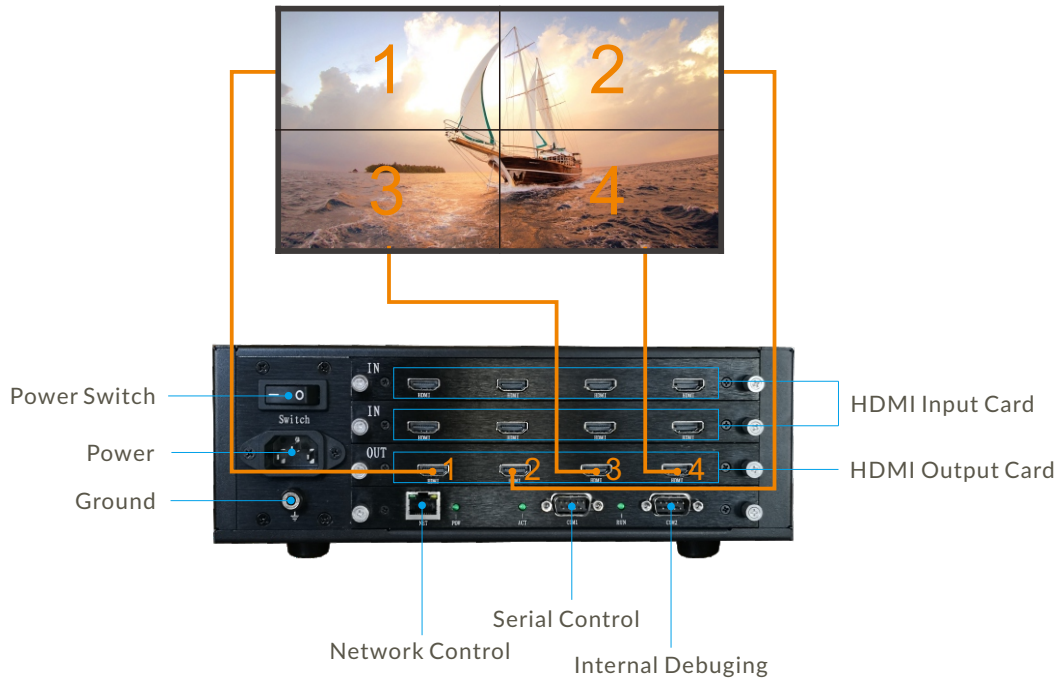


Output Synchronization



EDID Editing

## PRODUCT STRUCTURE



## SPECIFICATIONS

|                              |                             |   |
|------------------------------|-----------------------------|---|
| Product hardware information | System structure            | Pure hardware FPGA architecture   |
|                              | Start up                    | <15s  |
| Input/Output Signal          | Operating system            | No CPU and operating system   |
|                              | Signal type                 | HDMI 1.3  |
| Image processing             | Channel                     | 4 in 4 out, 4 in 8 out, 8 in 4 out  |
|                              | Display mode                | Roaming, overlay, zoom in/out, multi-windowing, scene switch, PIP, full screen and combination screen |
| Control function             | Input resolution            | 1080p   |
|                              | Scene/Signal switching time | Millisecond-level switching   |
| Stability                    | Number of signal copy       | Up to 8   |
|                              | Single-screen window        | 4 windows on each two screens   |
| Working environment          | Signal preview              | Optional  |
|                              | Control structure           | Software /Hardware  |
| Stability                    | Control method              | RS232/Network/Keypad and compatible with third party control system                                   |
|                              | Management mode             | C/S, Mobile   |
| Working environment          | Safety                      | Hardware structure, no virus interference   |
|                              | MTBF                        | 50000h  |
| Working environment          | Continuity                  | 365 days, 7x24 hours operation  |
|                              | Operating temperature       | -15~60°C  |
| Working environment          | Storage temperature         | -30~75°C  |
|                              | Operating humidity          | 10 to 90% without condensation  |
| Working environment          | Storage humidity            | 5~95% without condensation  |